



Advancing Agriculture through Research

WGRF Tours the University of Manitoba

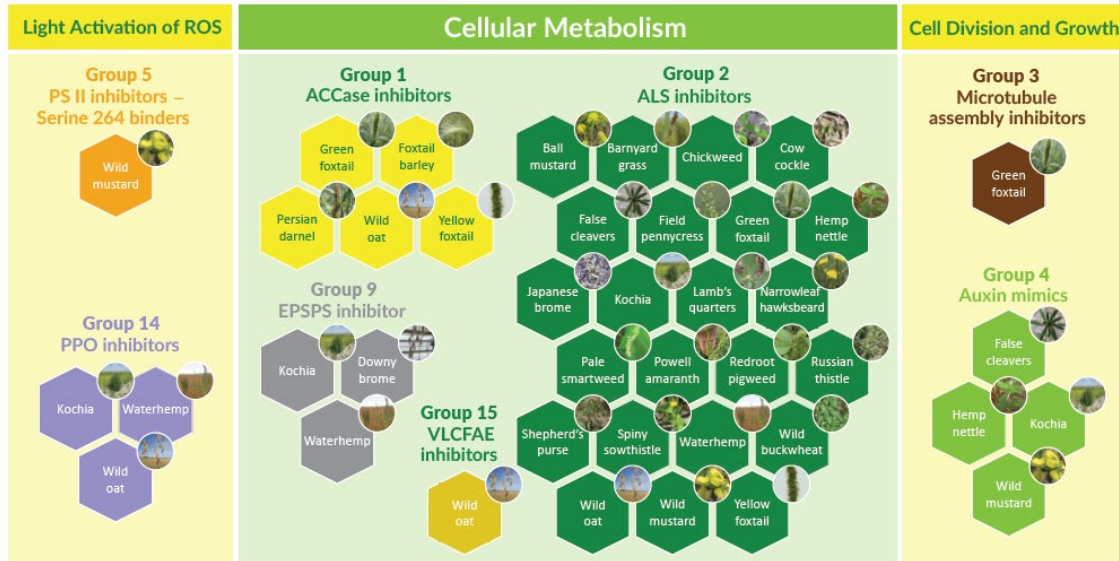
The WGRF Board had the opportunity to tour plots and meet with researchers at the University of Manitoba following the Board Meeting on July 15th in Winnipeg Manitoba.



Integrated Crop Agronomy Cluster Research

The WGRF has developed a poster illustrating herbicide-resistant weeds in the Prairie Region, created by Dr. Charles Geddes through ICAC 2. The poster unfolds to 15.75 x 20 inches. We have extra copies available at the WGRF office and will be distributing them over the coming months. If you're interested in receiving posters for distribution or would like the print files, please reach out, and we can send them to you.





Research Funding Highlights

WGRF continues to participate in processes at the Agriculture Funding Consortium (AFC), Agriculture Development Fund (ADF), Manitoba Agriculture – Research & Innovation, Canola Agronomy Program (CARP) and others. In May, the Research Committee reviewed the Letters of Intent submitted to AFC, ADF, and Manitoba Agriculture. 173 Letters of Intent were reviewed, 113 were requested for full proposal. Additionally, the Research Committee will be reviewing proposals from the Canola Agronomy Research Program later this year and will reconvene in the fall to evaluate the full proposals.

Sustainable Canadian Agricultural Partnership Clusters (2023-28)

WGRF is investing over \$12 million in research through Agriculture and Agri-Food Canada's AgriScience Program – Clusters Component, an initiative under the Sustainable Canadian Agricultural Partnership. Collaboration is central to our research strategy, and WGRF acknowledges the contributions of all funders and partners that made these Clusters possible:

- Integrated Crop Agronomy Cluster (\$7.6 million) *Led by WGRF
- Wheat Cluster (\$2.4 million)
- Barley Cluster (\$1 million)
- Diversified Field Crop Cluster (\$1 million)



Advancing Agriculture through Research

Two New Monitoring Website Launched

The PrairieWeeds.com website launched on May 28, 2024. Prairieweeds.com will serve as the digital home of the Prairie Weed Monitoring Network (PWMN), offering a wealth of resources and up-to-date information on weed abundance, herbicide resistance, and integrated weed management specific to the Canadian prairies.

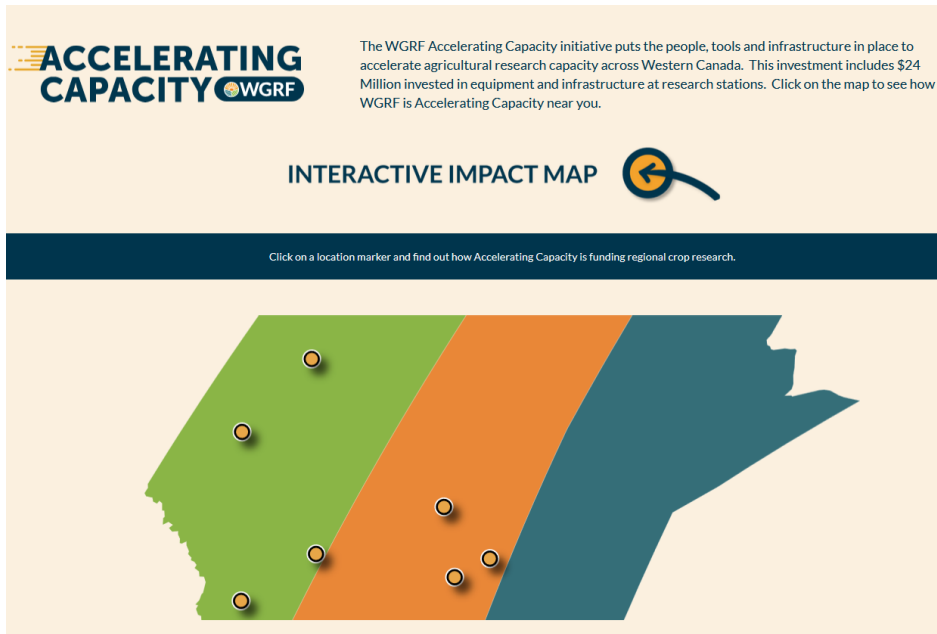
The website PrairieCropDisease.com was launched by WGRF on June 6, 2024. The Prairie Crop Disease Monitoring Network (PCDMN) is a coordinated field crop disease monitoring program for the Prairies, focusing on providing timely information about crop diseases and highlighting effective disease management strategies.

WGRF has now successfully developed websites for the three major pest monitoring networks in Western Canada—Insects, Weeds, and Disease. The goal of these networks has always been to provide important and timely information to growers and agronomists. These new websites will greatly improve communication and engagement, ensuring that stakeholders have access to the latest research and disease management strategies.



WGRF Accelerating Capacity Interactive Map

WGRF has prioritized supporting and expanding research capacity across Western Canada through our targeted capacity-building initiative. To highlight these efforts, WGRF has closely examined the impact these investments have had on local communities and stakeholders.



An interactive map on the WGRF website <https://wgrf.ca/accelerating-capacity/> has been developed highlighting the impact of these investments. The Phase 2 capacity map has stories and photos featuring:

- Mackenzie Applied Research Association
- Farming Smarter
- SARDA Ag Research
- Chinook Applied Research Association (CARA)
- Saskatchewan Conservation Learning Centre (CLC)
- Indian Head Agricultural Research Foundation (IHARF)
- East Central Research Foundation (ECRF)

Your support and membership in WGRF are greatly appreciated. To learn more about what is happening at WGRF or if you have any questions about the information in this update, please contact:

Laura Reiter
WGRF, Board Chair
(306) 827-2267
LauraReiter@wgrf.ca

Wayne Thompson,
WGRF, Executive Director
(306) 975-2081
WayneThompson@wgrf.ca